

SOUTH EAST MARTS SALES NEWS



Auctioneers

HAILSHAM'S HEADLINES



Auctioneers

FIRST STORE CATTLE SALE OF THE YEAR

WEDNESDAY 17TH JANUARY

...GET YOUR ENTRIES IN!

**THURSDAY 4TH JANUARY 2024
HAILSHAM MARKET**

Market Street, HAILSHAM, Sussex. BN27 2AG

Tel:- 01323 844874

Mobile:- 07890 359622

Roger Waters' Mobile 07860 663345 (Home 01273 832360)

e-mail address ~ info@southeastmarts.co.uk

visit our web site ~ www.southeastmarts.co.uk

South East Marts

are pleased to announce
that they are holding the

Special Online Spring Sale *of*

Pedigree Sussex Bulls & Registered Females

As Official Auctioneers to the
Sussex Cattle Society

On 15th-16th March 2024

Closing Date for Entries
28th February 2024

Please support this first Online Sale of
Sussex Bulls, Cows with calves at foot,
In-Calf Cows, In-Calf Heifers,
Maiden Heifers & Yearling Heifers



Entry forms available now

AVAILABLE NOW

FIXTURE LIST 2024

**Market dates, special sales, farm sales,
collective sales, Dolphin Sheep Fair &
Other important dates for the diary**

CALENDARS

**Available online to download in the New Year
Now available from the Market Office**

Limited printed numbers available

Please ring 01323 844874 to be added to the list

www.southeastmarts.co.uk

**Free, farmer led events and mentoring programme
in the South Downs National Park**

Pasture and Profit in Protected Landscapes is a free, farmer-led programme of farm walks, events, webinars and mentoring open to everyone farming in the South Downs National Park.

It is intended to support farmers who would like to explore adaptive grazing techniques and focuses on agroecological farming methods, adaptive and conservation grazing and reduction of inputs to help farmers improve business resilience.

The programme is facilitated by Pasture for Life, funded by FIPL and supported by the South Downs National Park Authority.

To find out more or to sign up please email isabella@pastureforlife.org
or call Ali on 07805 167 624



**PASTURE
FOR LIFE**

Department
for Environment,
Food & Rural Affairs
Leading in Protected
Landscapes Programme

**SOUTH DOWNS
NATIONAL PARK**

HAILSHAM MARKET - PRIMESTOCK DAY

PRIME STOCK – WEDNESDAY 3RD JANUARY

PRIME CATTLE (9) *Auctioneer: Roger Waters*

Little change, selling well, no post Christmas blues. **Derek Southouse** out with his quality homebred Limousin heifers and scores double top at 275p and 268p per kg grossing **£1541** and **£1498.75**. **Mr & Mrs James Cook** have young medium weight Aberdeen Angus x heifers to 263p per kg and good to see **James Seller's** young lightweight Sussex steer changing hand at close to **£1400**.

CULL COWS (1) *Auctioneer: Roger Waters*

Just the one - **Tom Rea's** Continental cross at 137p per kg and grossing **£1068.60**.

CALVES (25) *Auctioneer: Roger Waters*

Twenty five calves forward - not quite as easy to place as some weeks but all traded. **Mrs MEH Pile & Son's** British Blue x bulls **£175, £150** etc and heifers **£150, £90** etc. **FS Thomas's** Aberdeen Angus x bulls **£169, £165** and heifer **£100**. **J & M Craig's** Aberdeen Angus x and British Blue x **£60**.

PIGS (0) *Auctioneer: Alex Moss*

No pigs on offer this week.

Entered for next week - *John Brooker's* prime pigs return for 2024! Followed by 10 Saddleback weaners/store pigs to be sold following the prime.

NEXT SALE OF STORE CATTLE

Now taking entries for

Wednesday 17th January 2024

Entries close Thursday 11th January 2024

Please let us know what you have

HAILSHAM MARKET - PRIMESTOCK DAY

SHEEP – 1162

Yet another big entry at Hailsham.

There is no doubt that sheep farming is blighted by appalling weather, however, the forecast for next week looks dry.

PRIME LAMBS (672) Auctioneer: Nick Young Overall average 267.9p

A big entry with a useful trade although not as keen as last week's flyer but no complaints. The lambs are showing the effect of the diabolical weather. The best lambs achieve a premium price and the faithful were well rewarded as the undermentioned clearly shows. Top price from **R J Miles £137** (twice).

Leading prices: RJ Miles £137 (twice), The Norton Farm Partnership £133 (twice), D Spanton £132, W & P New £131, Jason West £130, £129 (twice), AD Woolgar £130

Leading prices per kilo: The Norton Farm Partnership 305p, 302p, 292p, 284p, AGL Ainslie 286p (twice), RJ Miles 284p, 279p, AD Woolgar 283p, Jason West 280p

STORE SHEEP (361) Auctioneer: Nick Young

Against all expectations, an excellent trade. There is clearly considerable faith in a significant improvement in the finished price as the New Year progress. FG Coles £124, £112; Fountain & Sewell £111.

Leading prices: FG Coles £124, £112, £110, CA Fountain & S Sewell £111, £106, G Bennett £104, J Morson £94, Holton Partnership £91, Bungehurst Farm Ltd £89, JE Lamplugh £89

CULL EWES & RAMS (129) Auctioneer: Nick Young

A markedly two tier trade with the best, biggest, meated ewes in very short supply and plain, small and ultra plain ewes heavily discounted. There is surely a significant margin to be had by buying the plainer models and turning them into good ones, if you have the feed. **C J Greenfield £118** (rams); **Holton Partnership £112**; **C P Fuggle £110**.

Leading prices: CJ Greenfield £119, £90, Holton Partnership £112, CP Fuggle & Sons £110, CA Fountain & S Sewell £98 (twice), Friday Street Farmers £94 (twice), The Norton Farm Partnership £89, M McKay £88



**Funeral arrangements - Ian Gasson
of Southdown Lodge, Clayton Hill
Monday 22nd January
12:00 Noon at Clayton Village Hall
Underhill Lane, Clayton, West Sussex BN6 9PJ**

*Please let us know exactly what you have to help us to make the best price of your stock.
For up-to-date marketing advice please call the sheep hotline 01323 844874 or the mobile
07890 359622 today. We want your sheep at Hailsham!*

HOLTRACTORS LTD

Hailsham ♦ Sussex

info@holtractors.co.uk Mobile 07850851941 After Hours 01323 840077 www.holtractors.co.uk

2019(69)JD 6130R c/w 643 loader, 600 Michelin tyres, 80hrs.
2019 NH T7-210 CVT g/box, 70hrs, F/linkage and PTO, Radar, GPS fully loaded .
2019 NH T7-245 Range command, 190hrs F/linkage and PTO.
2019 NHT5-105 c/w MX 406 Loader 67hrs
2015 JD 6125R 3750hrs Loader ready, H340 Loader available if required 95% good tyres
2019 (69) JD130R 196Hrs, Loader ready
30+ Tractors Ford - NH - MF - JD- IH - Case- Iseki -JCB
Hydro 3050 Pivot steer[Brand New] Loading shovel.
2019 Spearhead 460 Multi -Cut with Mulching kit as new

Big Balers: Vicon - Welger - MF - Heston - Krone

Conventional Balers: Welger - NH - JD - IH - Claas - Heston - Galignani-Bamford - Deutz-Fahr

20+ Mowers in stock. Lely-Pottinger-Vicon- Kverneland-Taarup-JD- MF-IH-Ransome-Deutz-Fahr -Tallis

30+ Tedders-Turners-Rakes

15+ Hay Grabs - Accumulators -Transporters

30+ Trailers 3ton-30ton Ag- Commercial- Construction-Dump-Hay - GP - Grain- Silage

30+ Toppers - Flail Mowers, etc.

30+ Trailers Livestock- Horsebox - Dual Purpose - Plant - GP-Tippers

15+ Ploughs

50+ Discs - Cultivators- Drills

10+ 360o Excavators - Dumpers - Volvo - JCB - Hyundai - Hitachi - Benford - Thwaites

500+ items in stock. Please look at our website for full descriptions and photos

SUSSEX STEEL CONSTRUCTION

DANIEL HUNTER-EVANS
Mob: 07951 438793
Email: DANIEL@SUSSEXSTEELCONSTRUCTION.CO.UK



AGRICULTURAL & INDUSTRIAL
BUILDINGS, REPAIRS & RENOVATIONS

SHEAR BLISS

SHEEP
SHEARING

SHEEP &
CATTLE
PREGNANCY
SCANNING

ED GINGELL

07986 283867



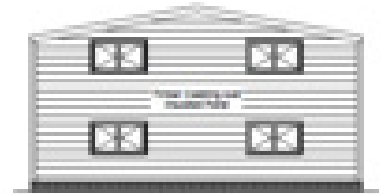
Planning | Project Management Procurement Services

We offer a fixed price
28 day Agricultural Prior
Notification Application
including:

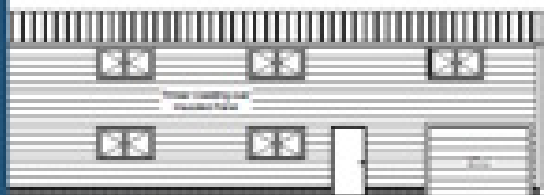
- Ordnance Survey Mapping
- Design Drawings
- Application
- Local Council Fees



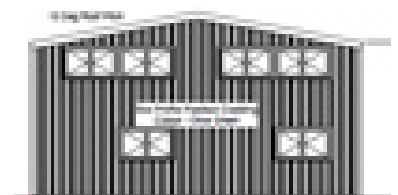
Front Elevation



Left Elevation



Right Elevation



Rear Elevation

For more information or to arrange a site visit call or email:
Nick@nfieldprojects.co.uk | 07738 703498



GRAHAM LONG

STEEL CONSTRUCTION LTD

FOR ALL YOUR AGRICULTURAL BUILDING NEEDS



TEL: 01435 865370 MOB: 07795 226296
graham@glconstruction.co.uk



CLEAR, RELEVANT & PROFESSIONAL ADVICE WHEN YOU NEED IT

Nick Young FRICS

01435 865077

e-mail: nickyoung@watsonsestates.co.uk

Farm insurance, the way it should be

We're a family-run business and pride ourselves on forging long term relationships with our farming and agricultural clients. Covering the South East, South West and Midlands, we deliver an extensive range of farm, agri business and equine policies tailored to you.

www.county-insurance.co.uk/farms

Farm & Equine **01865 844985**

General **01865 842084**

 Follow us **@County_Farm**

